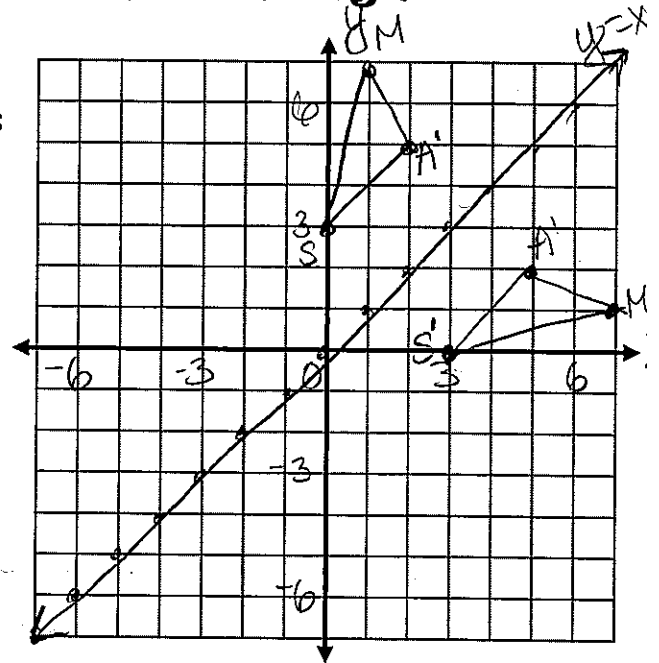


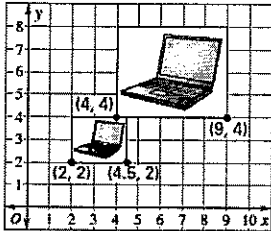
Mixed Problems From Sections 1 through 3

21.) Graph $\triangle SAM$ with coordinates $S(0,3)$, $A(2,5)$, and $M(1,7)$ on the set of axes to the right. Reflect $\triangle SAM$ over the line $y = x$. What are the coordinates of the image?

$S'(3,0)$
 $A'(5,2)$
 $M'(7,1)$

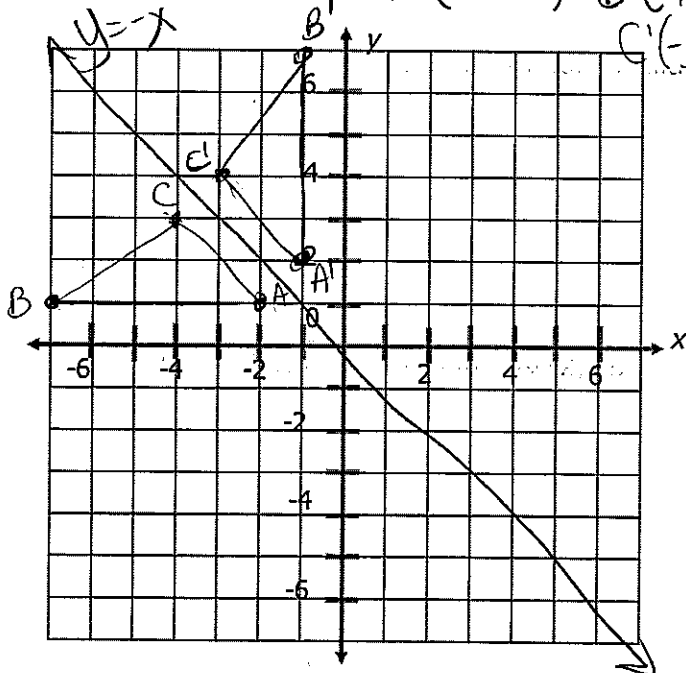


22.) Taylor uses a computer program to shrink a picture, as shown. What is the scale factor of dilation?



$\frac{1}{2}$

23.) Draw $\triangle ABC$ with coordinates $A(-2,1)$, $B(-7,1)$, and $C(-4,3)$. Then, draw the reflection of $\triangle ABC$ in the line $y = -x$. Label the vertices of each image. What are the new coordinates?



24.) Graph trapezoid $RYAN$ $R(-6,6)$, $Y(-3,-3)$, $A(3,-3)$, $N(6,6)$. Then graph it under a dilation with a scale factor of $\frac{2}{3}$.

